



Read all instructions completely before starting any part of the installation. Each sub rail kit comes complete with all parts, hardware and installation guide to install one complete sub-rail kit. (EXCLUDING TOP RAIL, POSTS, SKIRTS AND CAPS) sub-rail kits have been pre-cut to 6' or 8' lengths. Check to ensure the kit is complete.

SAFETY: Always wear goggles when cutting, drilling, and fastening materials.

NOTE: Check local building code requirements prior to installation.

IMPORTANT NOTES:

- 5 1/2" Top Rail is sold separately and comes in 6', 8', 12', and 16' lengths. Use the Top Rail Connectors with all joints including Post, In-Line, 45° and 22.5° to ensure a proper fit between parts.
- For best results, we recommend the use of the Tallboy Surface Mount Brackets for the most secure and strongest method of attachment.
- **Post sleeves are designed to be installed within the height of the rail system they are being used with and are NOT designed for structural use.**

1 POST INSTALLATIONS

The 4x4 and 6x6 post sleeves have been designed to slide easily over the rust proof coated Tallboy. Follow the Surface Mount Bracket instructions for wood deck or concrete slab before installation of the Post Sleeves. Pressure treated wood 4x4 or 6x6 can also be used but is not recommended due to uncontrolled swelling, cracking and twisting of the wood. A minimum lumber size of 3 3/8" and a maximum of 3 9/16" is required for proper fit of sleeves. A tight fit is not recommended.

IMPORTANT: DETERMINING POST HEIGHT

4x4 CENTER POST:

For 36" railing height, the post sleeve must be cut to 34".
For 42" railing height, the post sleeve must be cut to 40".

6x6 MAIN POSTS:

For other than column full height 6x6 post installations, cut the main 6x6 Post Sleeve a minimum of 2" higher than the desired rail height or 38" for a 36" rail or 44" for a 42" rail.

NOTE: If wood posts are being used, small shims may be used if excessive gaps are present in the post sleeves.

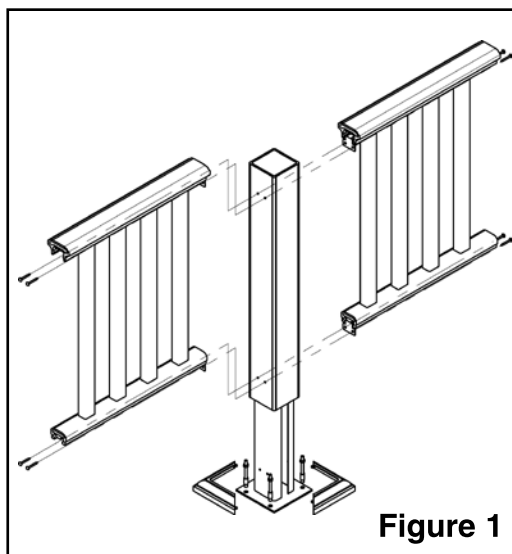


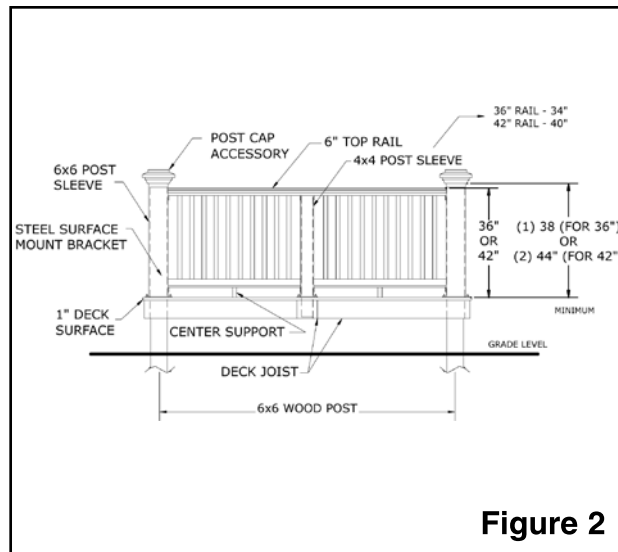
Figure 1

2 RAIL MEASURING AND CUTTING

Measure between post sleeves, top and bottom, to obtain the rail length. Also check rail opening to ensure the posts, newels or wall where the rail is to be mounted are plumb and square. To obtain proper baluster spacing, be sure to measure and cut retainer and bottom rail an equal distance from the center.

TIPS: See our website www.azek.com for:

- 1) Optional cut technique to equally divide rail kits, i.e., make 2 rail sections from one rail kits.
- 2) How to cut and position railing on the Post Sleeve at a 45° angle.

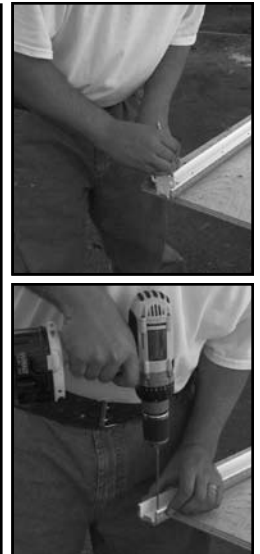
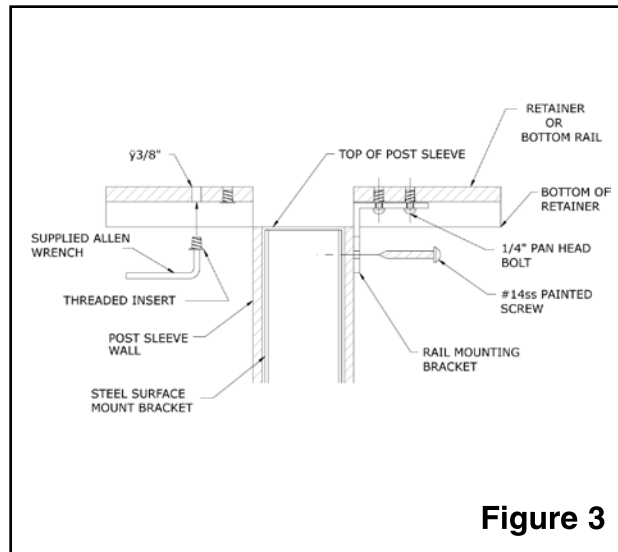


3 RETAINER AND BOTTOM RAIL BRACKET INSTALLATION

Place the U shaped end of the bracket on the under side of the bottom rail and retainer just slightly inside (1/16") the cut edge. Mark and drill pilot holes with a 3/16" drill bit. Drill holes to proper size using a 3/8" drill bit.

NOTE: When drilling the bottom rail, drill through the bottom wall only - do not drill through the top surface wall. Using the Allen Key supplied, screw the threaded insert into the 3/8" holes from the bottom until flush. Be careful not to over tighten/torque. Fasten brackets using the 1/4" x 20 pan head bolts to the underside of the retainer and bottom rail.

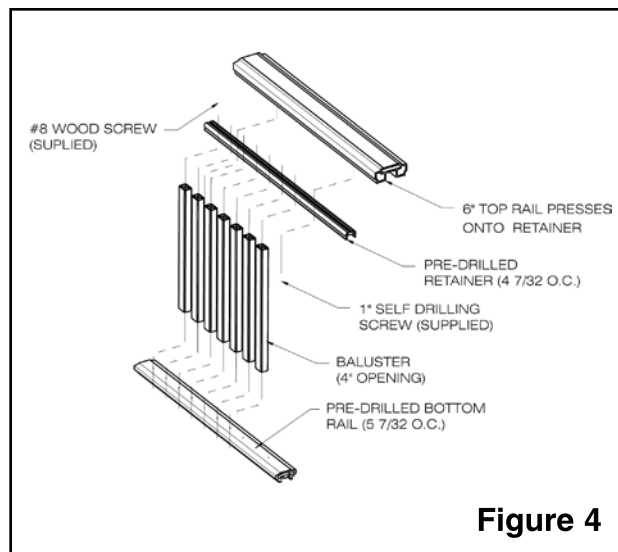
NOTE: The hidden fastener brackets will not work in the over the post application for the Reserve Rail system due to the placement of the brackets.



4 ASSEMBLE AND FASTEN

Align the ends of the baluster with the pre-drilled holes in the retainer (see fig. 4).

Using the #8 stainless steel wood screws, fasten the ends of the baluster to the retainer first, through the pre-drilled holes, then fasten the other ends of the balusters to the bottom rail (be careful not to overtighten/torque the screws.)



5 CENTER RAILING SUPPORT

Attach the stainless steel center support bracket to the pre-cut center support using the 1 remaining #8 wood screw. Install the support assembly in the center of the underside of the bottom rail using the 1" screws supplied in the sub kit.



6 CONNECTION TO POSTS

#6-1: 4x4 Center Post, Corner Post and 6x6 Main Posts

Center the assembled rail sub section between the post sleeves and position the bottom of the retainer approximately 1/16" above the top of the 4x4 center post. Mark the bracket hole locations and drill with a 3/16" drill bit. Fasten the section to the post using the #14 x 2" stainless steel painted screws supplied with a #3 square drive bit. NOTE: For the 4x4 center post and corner post, the bottom of the retainer should sit at the top of the post to allow the top hand rail to pass over the 4x4 center post. For a center post corner application a 6" Top Rail Corner Connection Hardware Pack is required.

#6-1: 6x6 Main Posts, 45° Connection

Follow the 45° Rail Installation Instructions or visit our website at www.azek.com for details. A 45° Hardware Pack is required for this installation.

NOTE: When fastening brackets to post sleeves DO NOT OVER TORQUE the screws. Once the screws are "seated" they are tight.



7 INSTALL ALL SECTIONS

Before installing the top rail, ensure all sub rail sections are installed.



8 INSTALL 6" TOP HAND RAIL

After all sub rail sections have been installed, measure the length between the 6x6 main posts and cut the Top Rail.

(NOTE: Use the System Connectors, sold separately, at all joint connections to ensure proper fit.) Place the cut Top Rail onto the retainer of the previously installed sub Rails and over the 4x4 center posts. (NOTE: If the top Rail is tight over the 4x4 Center Post, the retainers may be misaligned. To correct this problem, loosen the #14 x 2" stainless steel screws holding the top brackets, reinstall Top Rail and retighten the screws.)

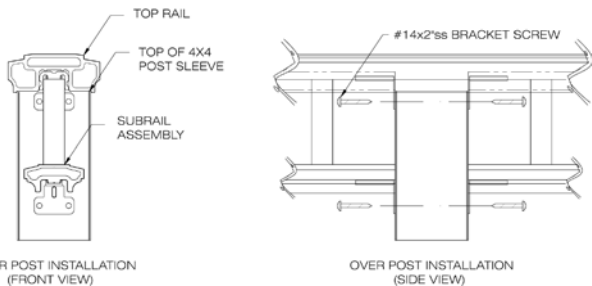
#8-1: Install Corner 6" Top Rail over Center Post

Follow the directions as per step #8. Cut Top Rails with corresponding 45° angles approximately 1/8" shorter than a piece for a tight fit to allow room for the joiner piece. Before installation of the Top Rail, insert both Top Rails into the joiner. Place the loose assembled Top Rail pieces onto the retainer, find the proper seating location and firmly press Top Rails onto the retainers. (NOTE: Caulking may be used to seal the joiner to the Top Rail if desired.) A 4x4 Over-Post Connection Hardware Pack is required for this application.



9 FASTEN THE 6" TOP RAIL TO RETAINER

Use the remaining 1" stainless steel screws supplied, fasten up through the retainer into the underside of the Top Rail to lock it in place. Space screws evenly. For additional holding strength use caulking between the Retainer and the Top Rail.



AZEK Building Products
801 Corey Street, Scranton, PA 18505
www.azek.com

